

# Water Demand & Supply Situation in Central Namib Area

Presented by: Coenie Koegelenberg

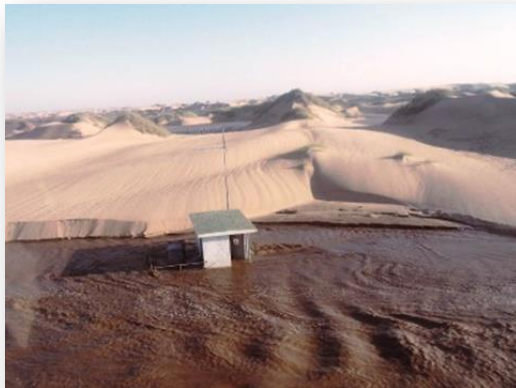


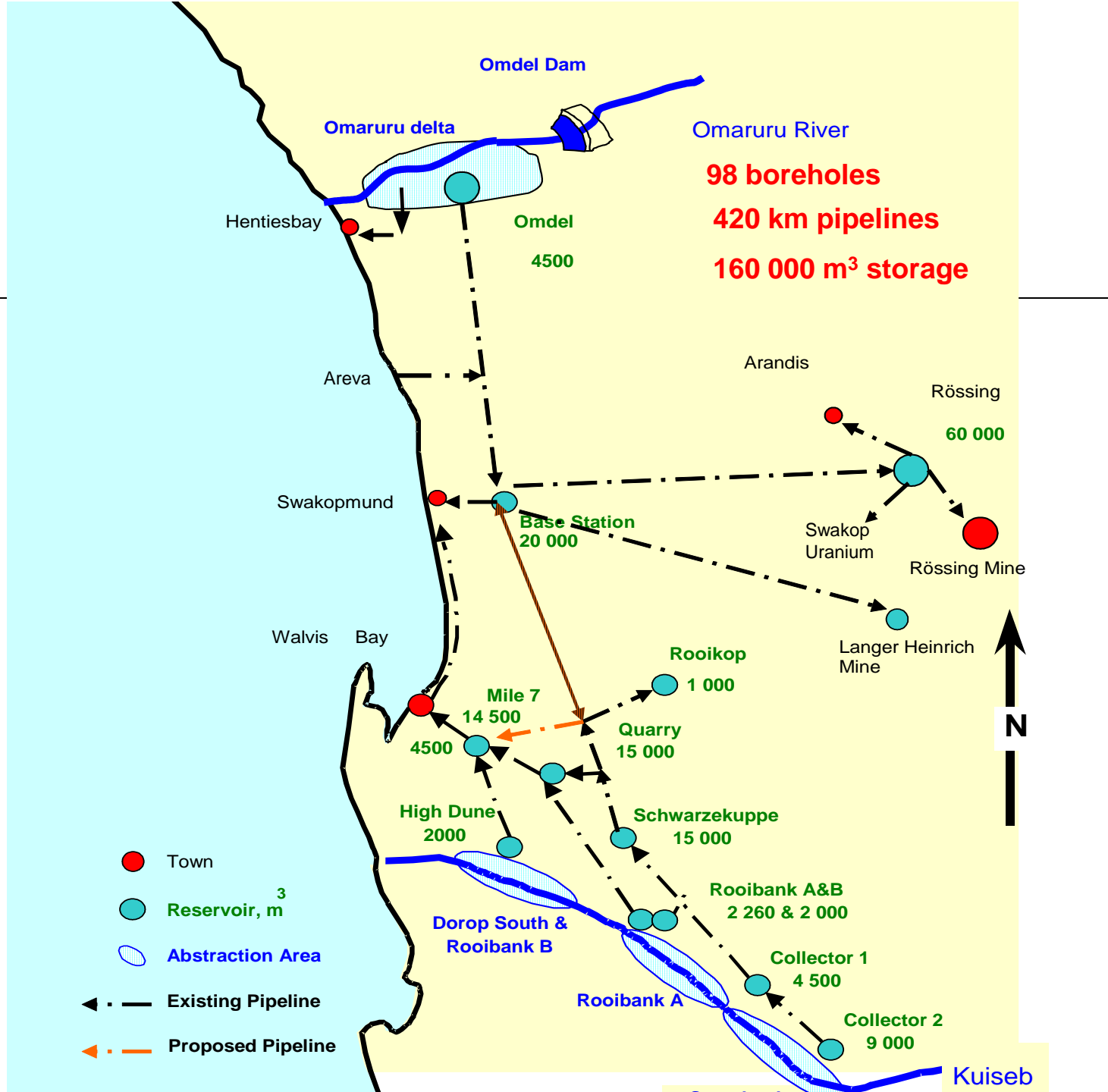
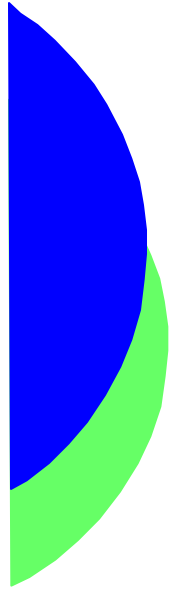
## Water Demand and Supply Situation in Central Namib Area

### Overview of Presentation

---

- Bulk water supply infrastructure
- Water supply and demand
- Way forward





# Water Supply and Demand Situation



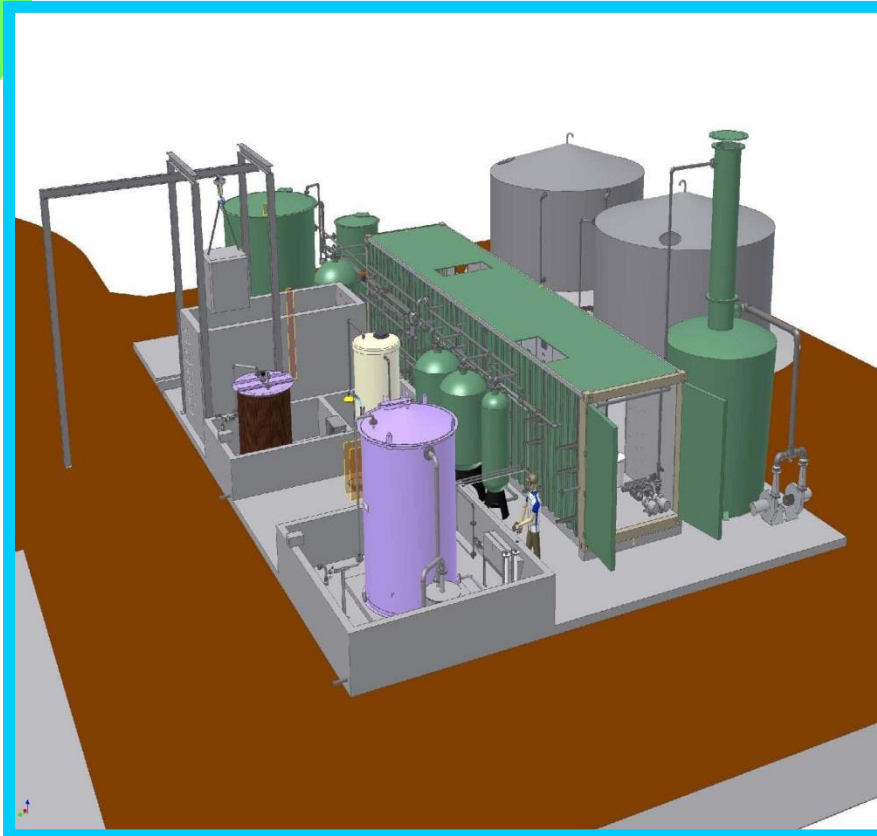
Local Authority		Annual Volumes (m <sup>3</sup> )				
		Predicted				
		1	2	3	4	5
		2014*	2015	2016	2017	2018
Domestic Demand	Municipality of Walvis Bay	5,888,343	6,056,760	6,238,463	6,425,617	6,618,385
	NamPort	266,387	271,715	277,149	282,692	288,346
	Smaller consumers fed from Kuiseb	274,074	279,555	285,147	290,849	296,666
	Municipality of Swakopmund	4,298,566	4,803,390	5,151,366	5,305,907	5,465,084
	Municipality of Henties Bay	549,604	577,084	605,938	636,235	668,047
	Arandis Town Council	432,000	480,000	500,000	550,000	605,000
	Smaller consumers fed from Omdel	99,520	101,510	103,541	105,612	107,724
	Plus 5% Losses	590,425	628,501	658,080	679,846	702,463
	<b>Total Domestic/Municipal</b>	<b>12,398,919</b>	<b>13,198,516</b>	<b>13,819,684</b>	<b>14,276,758</b>	<b>14,751,715</b>
Mining & Industrial D	Rössing	2,715,634	2,715,634	2,715,634	2,715,634	2,715,634
	Langer Heinrich	1,677,290	1,677,290	1,677,290	1,677,290	1,677,290
	Husab	775,025	1,178,160	4,239,050	5,399,570	5,328,444
	Zhonghe					
	Sandpiper Phosphate					
	Etango					
	Valencia					
	Omahola					
	Namib Lead & Zinc		120,000	120,000	120,000	120,000
	Plus 5% Losses	258,397	284,554	437,599	495,625	492,068
<b>Total Mines &amp; Industry</b>	<b>5,426,346</b>	<b>5,975,638</b>	<b>9,189,573</b>	<b>10,408,119</b>	<b>10,333,436</b>	
<b>Total Domestic &amp; Mines</b>	<b>17,825,265</b>	<b>19,174,154</b>	<b>23,009,257</b>	<b>24,684,877</b>	<b>25,085,152</b>	
Sources	Omdel	5,000,000	5,000,000	2,700,000	2,700,000	2,700,000
	Kuiseb	7,000,000	7,000,000	7,000,000	7,000,000	7,000,000
	Swartbank J-line					
	New Source - Areva	5,426,000				
	<b>Total Sources</b>	<b>17,426,000</b>	<b>12,000,000</b>	<b>9,700,000</b>	<b>9,700,000</b>	<b>9,700,000</b>
<b>Total Surplus</b>	<b>-399,265</b>	<b>-7,174,154</b>	<b>-13,309,257</b>	<b>-14,984,877</b>	<b>-15,385,152</b>	

\* calendar year starting in January

## Water Demand and Supply Situation in Central Namib Area

### Way Forward

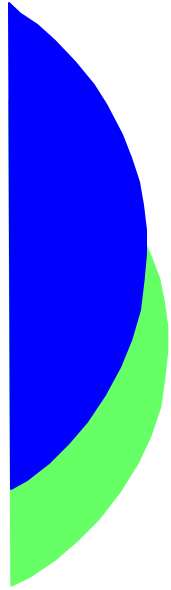
---



- Desalination the only viable option
- Mines to be supplied fully with desalinated water
- Towns to be phased in when groundwater sources fully utilized
- NamWater and the Ministry of Agriculture, Water & Forestry currently in consultation on the way forward to secure a source of desalinated water. To be concluded by the end of the second week of June 2014

**Present Water Situation in Central Namib Area**

---



**Thank you**